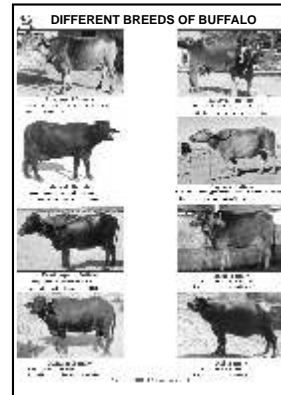


ANIMAL HUSBANDARY / Agriculture Size 50x 65 cms. Laminated and Attached with Durable Strips
 A Unique Collection of Charts are printed on light weight Styrene plastic & an eyelet is pierced on top for hanging purpose. Size 50x 65 cms. Laminated & Framed on NU-Wood Board

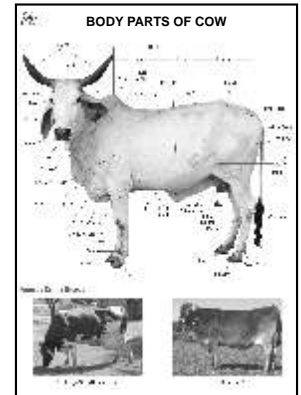
- CH 1701 Composition of rations for layers at different age groups
- CH 1702 Vaccinations schedule for dairy animals
- CH 1703 Dairy cattle shed map for 10 buffaloes/cows & their calves
- CH 1704 Composition of rations for different classes of pigs
- CH 1705 Oestrous cycle for different categories of animals
- CH 1706 Composition of concentrate mixture according to level of milk production
- CH 1707 Composition of mineral mixture (without salt) for dairy animals
- CH 1708 Composition of Broiler Ration
- CH 1709 Food Habits of Birds
- CH 1710 Food Habits of Animals
- CH 1711 Different Breeds of Cows
- CH 1712 Different Breeds of Buffalo
- CH 1713 Appliances of Handling Animals
- CH 1714 Casting of Farm Animals
- CH 1715 Methods of Identification
- CH 1716 Disbudding & Dehorning
- CH 1717 Methods of Milking & Cross Section of Cow's Udder

- CH 1718 Poultry Farm Equipments
- CH 1719 Poultry House
- CH 1720 Parts of Chicken & their Combs
- CH 1721 Body Parts of Duck & Turkey
- CH 1722 Body Parts of Pig
- CH 1723 Body Parts of Sheep
- CH 1724 Body Parts of Cow

**First Time
in India.**



CH 1711

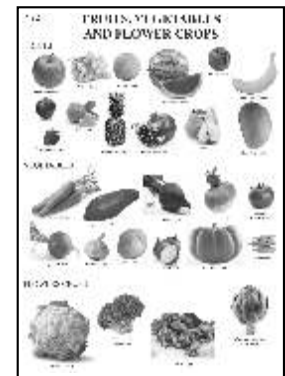


CH 1724

- CH 1736 Cereal, Pulses and Oil Seed Crops
- CH 1737 Crops Rabi, Kharif And Summer
- CH 1738 Different Implements or Cultivation of Field
- CH 1739 Different Propagation Method
- CH 1740 Fruits, Vegetables and Flower Crops
- CH 1741 Irrigation System
- CH 1742 Mendelian Genetics Monohybrid and Dihybrid Cross
- CH 1743 Meteorological Instrument
- CH 1744 Plant Diseases
- CH 1745 Surveying and Leveling Instrument
- CH 1746 Tools and Implemetnsfor Horticultural Crops



CH 1737



CH 1740

forestry

Size 50x 76 cms. Laminated and Attached with Durable Strips
 Size 50x 76 cms. Laminated & Framed on NU-Wood Board

1. Silviculture and forestry
2. Seed year
3. Patterns of planting
4. Forest thinning
5. Distribution of forest cover
6. Important light demander, shade bearer and demanding species
7. Nutrient uptake and release
8. Vegetation in eastern and himalayas
9. Climate and forest types in india
10. Forms of crown
11. Average height growth in some species according to quality
12. Site quality and diameter at different age in some species
13. Tree classification in regular forests
14. Causes of primary succession
15. Champion and seth's classification of forests of india
16. Choice of species:- site factors
17. Purpose of plantation : sport goods
18. Fast growing indigenous species
19. Fast grown exotic species
20. Nursery bed
21. Method of transplanting
22. Calendar of nursery operation
23. Methods of soil working
24. Seed rate
25. Method of planting
26. Spacing
27. Silviculture systems
28. Hand tools used in carpentry
29. Types of chisels
30. Types of saws-I
31. Types of saws-II
32. Carpentry joints-I
33. Carpentry joints-II
34. Gross features of wood
35. Defects in timber
36. Fungal defects in wood
37. Timber decay
38. Types of axes
39. Logging instruments
40. Methods of sawing logs
41. Types of leaf margin
42. Types of leaf apex
43. Types of leaf base
44. Inversion heterozygote
45. Translocation
46. Anther & pollen culture